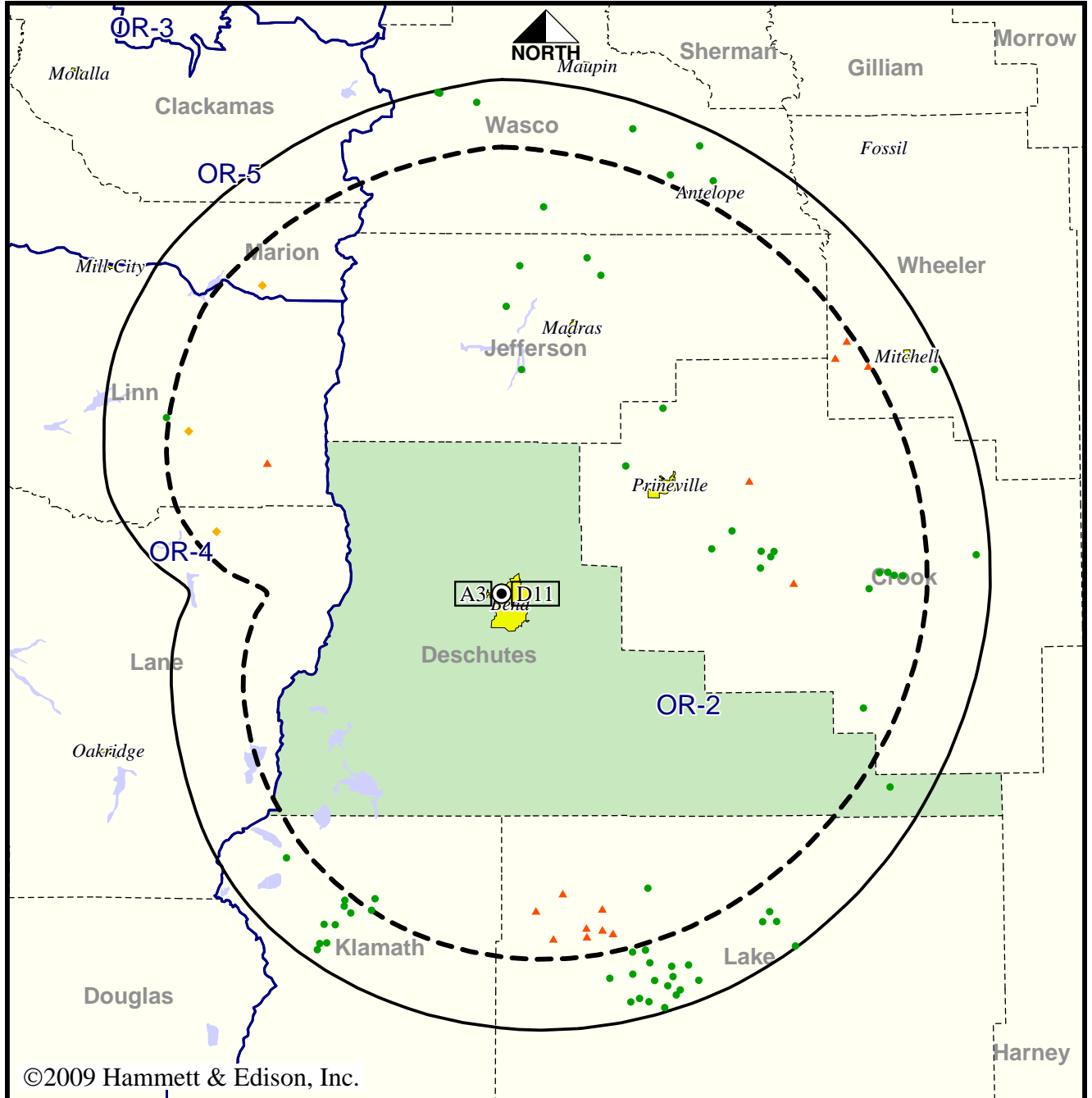


Station KOAB-TV • Analog Channel 3, DTV Channel 11 • Bend, OR

Expected Operation on June 13: Licensed

Digital License (solid): 90.0 kW ERP at 245 m HAAT, Network: PBS  
 vs. Analog (dashed): 58.9 kW ERP at 227 m HAAT, Network: PBS

Market: Bend, OR



©2009 Hammett & Edison, Inc.



- Coverage gained after DTV transition
- No symbol = no change in coverage
- ◆ Coverage lost but still served by same network
- ▲ Coverage lost and no other service by same network

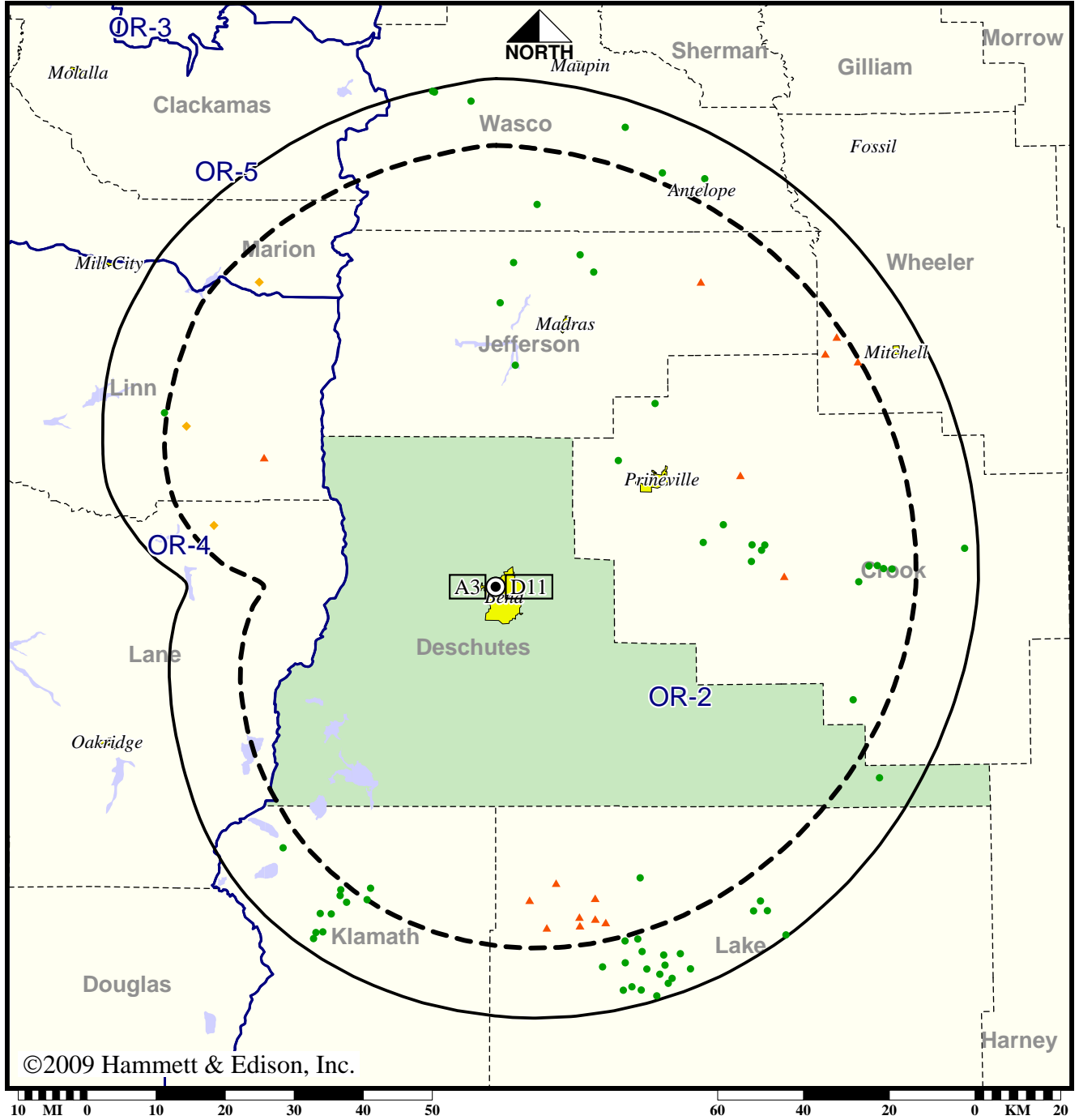
Analog service	153,917 persons
Digital service	154,910
Analog loss	86
Digital gain	1,079
Net gain	993

Station KOAB-TV • Analog Channel 3, DTV Channel 11 • Bend, OR

Approved Post-Transition Operation: Licensed

Digital License (solid): 90.0 kW ERP at 245 m HAAT, Network: PBS  
 vs. Analog (dashed): 58.9 kW ERP at 227 m HAAT, Network: PBS

Market: Bend, OR



©2009 Hammett & Edison, Inc.

- Coverage gained after DTV transition
- No symbol = no change in coverage
- ◆ Coverage lost but still served by same network
- ▲ Coverage lost and no other service by same network

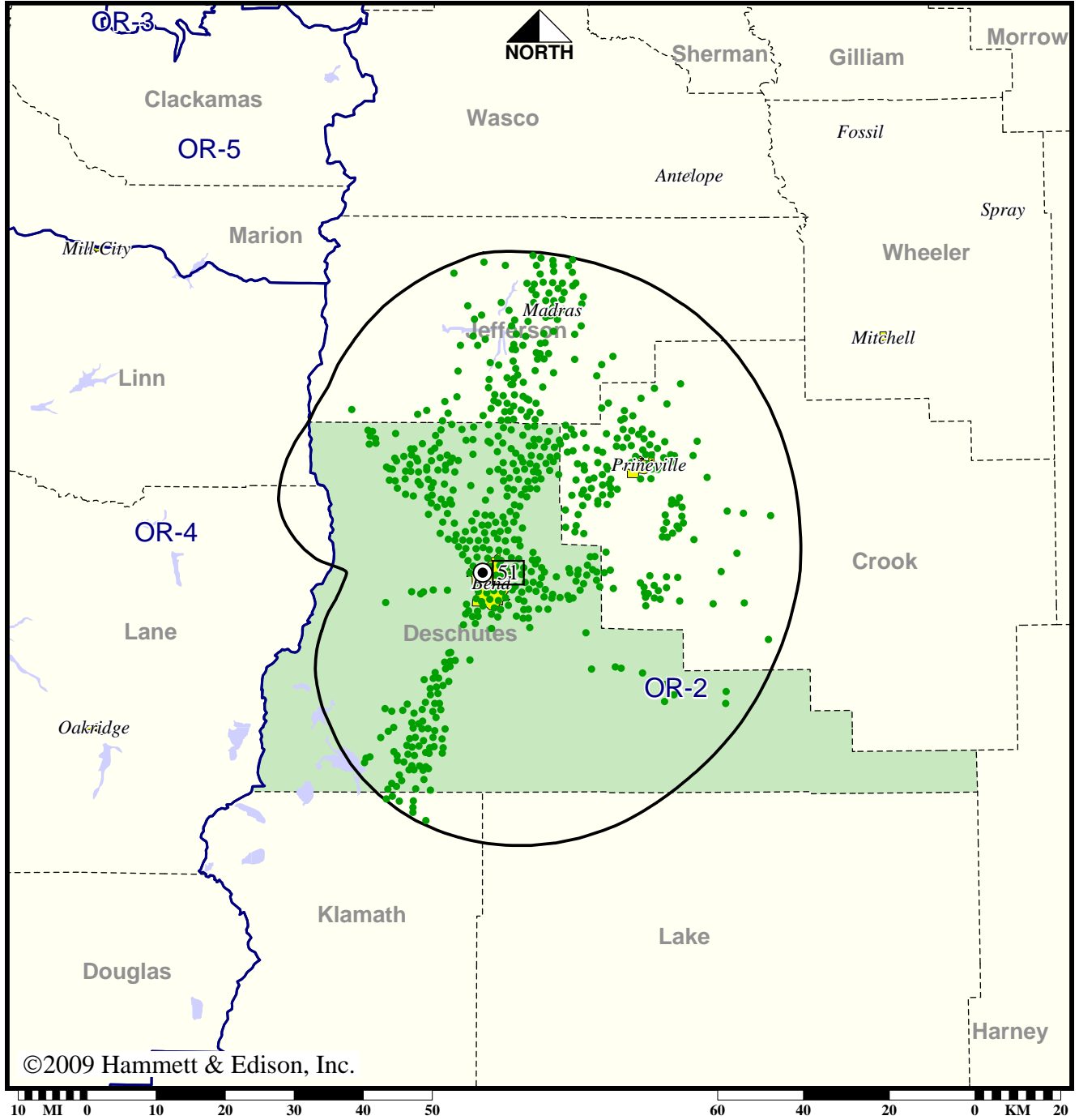
Analog service	153,917 persons
Digital service	154,878
Analog loss	91
Digital gain	1,052
Net gain	961

DTV Station KOHD • Channel 51 • Bend, OR

Expected Operation on June 13: Licensed

Digital License (solid): 84.1 kW ERP at 206 m HAAT, Network: ABC

Market: Bend, OR



● Coverage gained after DTV transition

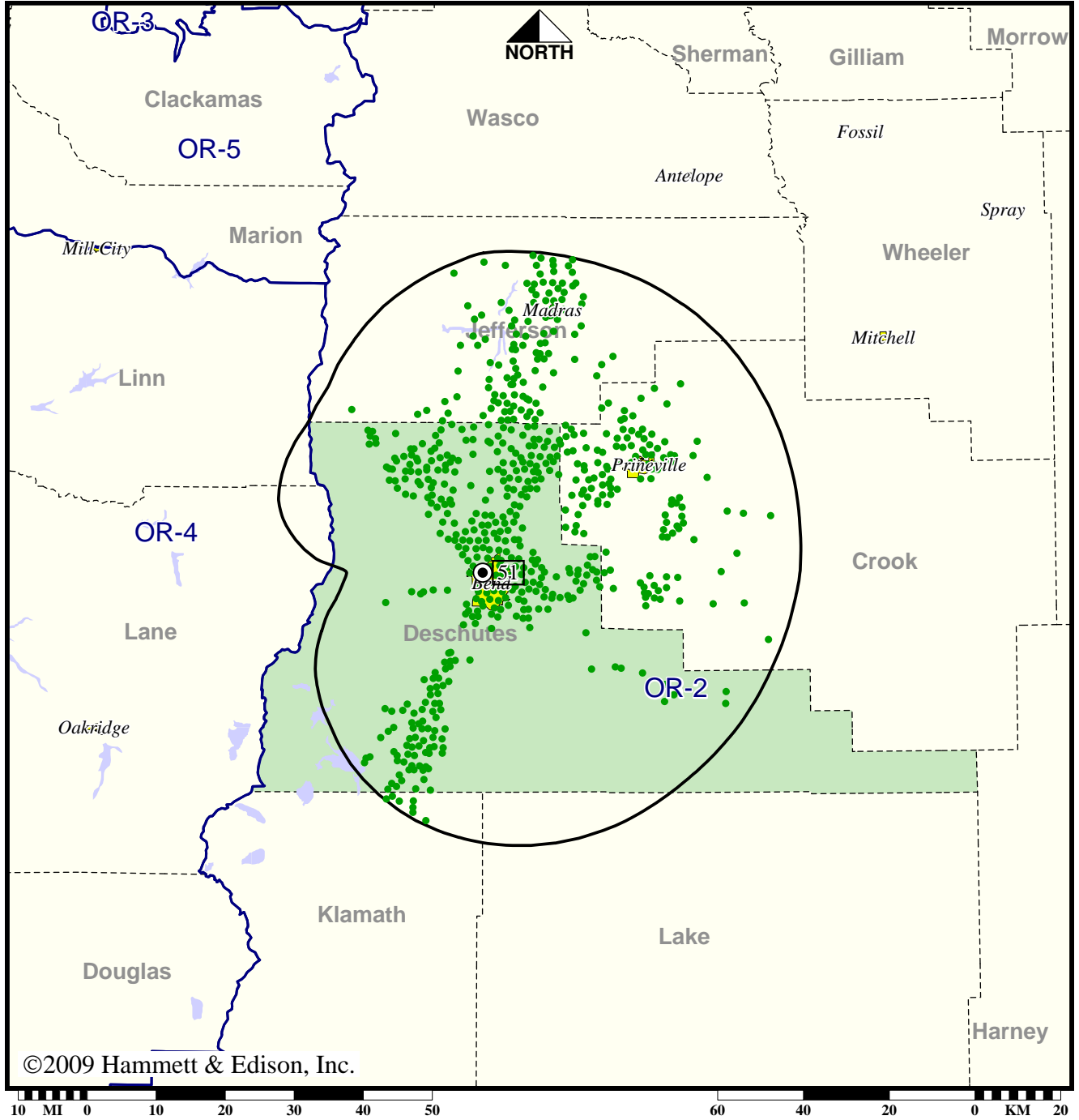
Digital service 145,866 persons

DTV Station KOHD • Channel 51 • Bend, OR

Approved Post-Transition Operation: Licensed

Digital License (solid): 84.1 kW ERP at 206 m HAAT, Network: ABC

Market: Bend, OR



● Coverage gained after DTV transition

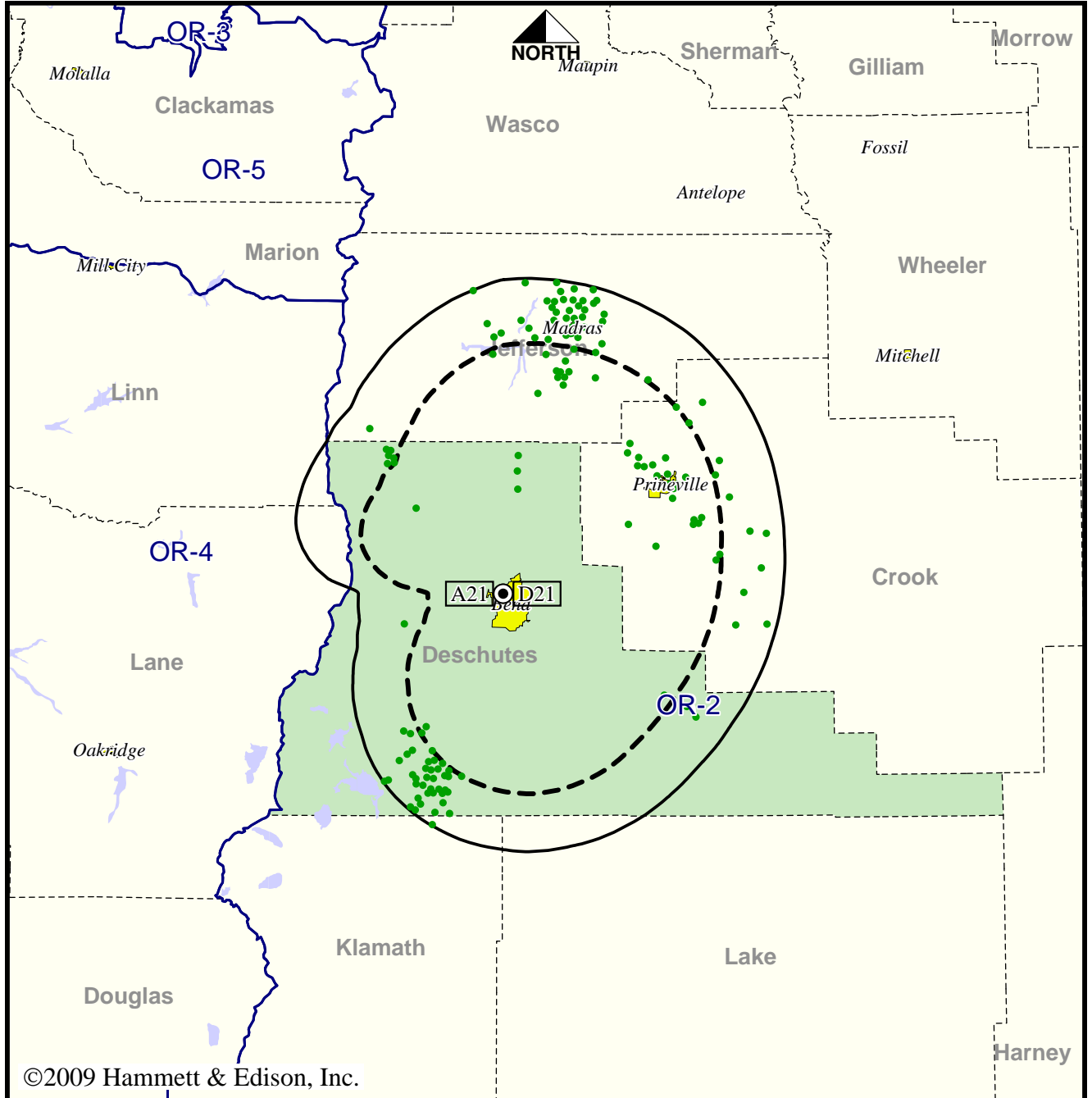
Digital service 145,866 persons

TV Station KTVZ • Analog Channel 21, DTV Channel 21 • Bend, OR

Expected Operation on June 13: Granted Construction Permit

Digital CP (solid): 22.0 kW ERP at 197 m HAAT, Network: NBC  
 vs. Analog (dashed): 126 kW ERP at 197 m HAAT, Network: NBC

Market: Bend, OR



©2009 Hammett & Edison, Inc.

- Coverage gained after DTV transition
- No symbol = no change in coverage

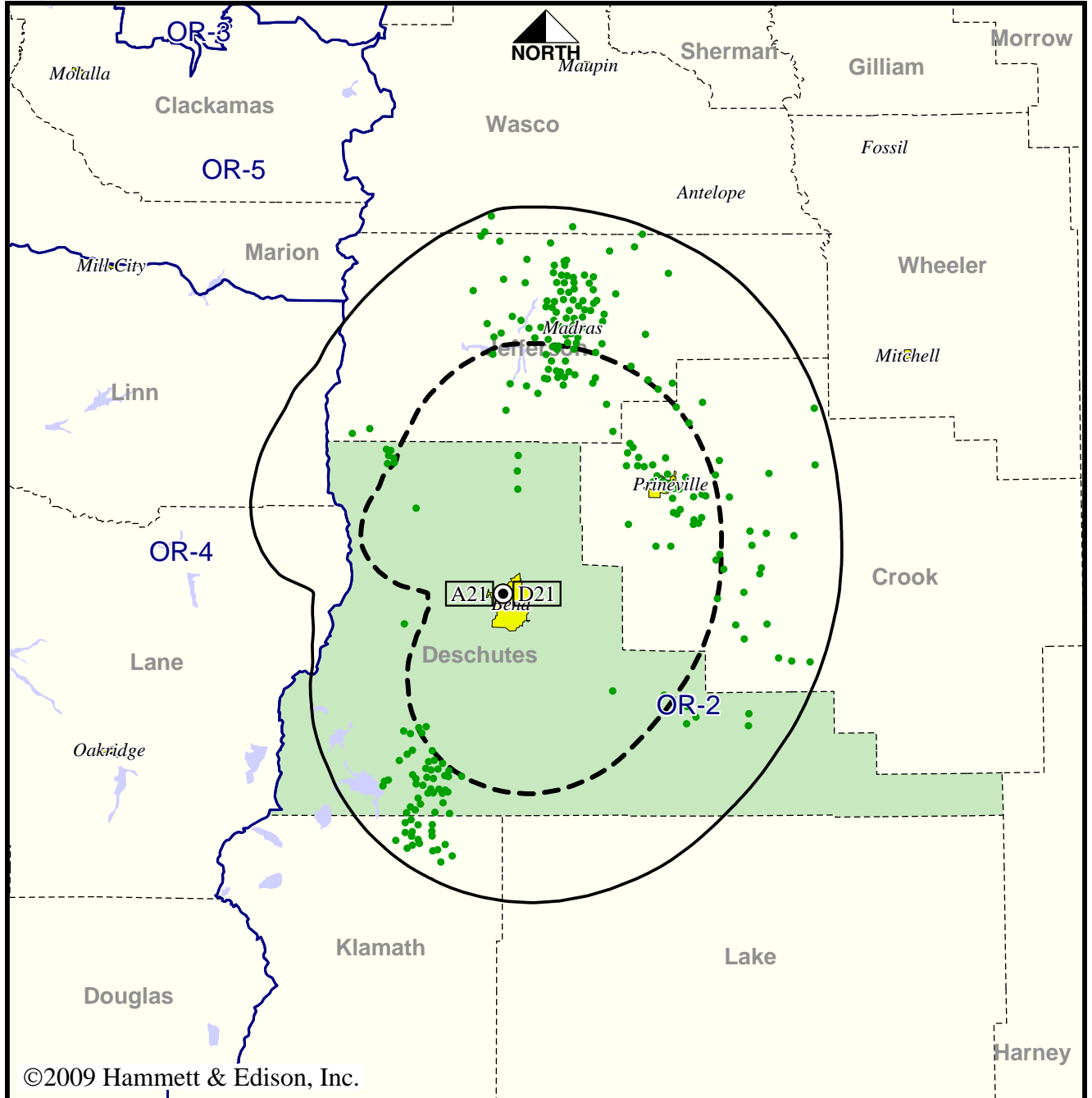
Analog service	119,413 persons
Digital service	143,967
Analog loss	0
Digital gain	24,554
Net gain	24,554

TV Station KTVZ • Analog Channel 21, DTV Channel 21 • Bend, OR

Approved Post-Transition Operation: Granted Construction Permit

Digital CP (solid): 250 kW ERP at 197 m HAAT, Network: NBC  
 vs. Analog (dashed): 126 kW ERP at 197 m HAAT, Network: NBC

Market: Bend, OR



©2009 Hammett & Edison, Inc.

- Coverage gained after DTV transition
- No symbol = no change in coverage

Analog service	119,413 persons
Digital service	151,302
Analog loss	0
Digital gain	31,889
Net gain	31,889